



THE ARTISTS SOCIETY OF CANBERRA

A supportive creative community for visual arts and artists

Founded 7 October 1927

The Artists Society of Canberra Inc
PO Box 1778
WODEN ACT 2606
Tel: 6282 1910
www.artistsocietyofcanberra.net
ABN: 85 510 725 624

NEWSLETTER

ISSUE No 4189
FEBRUARY/MARCH 09

2009 Workshop Tutors

**Ilona Lasmanis
Paul Margocsy
Gail Tavener
Charles Sluga
Susan Cesarini
Peter Griffen
Peter Latona**

See Page 5 for Details

Change to Monthly Meetings

The venue and format for the general meetings has changed. Meetings will be held at the Canberra Bowling Club, Hobart Avenue, Forrest. The evening will start with a business meeting from 6:30 pm to 7.00 pm, followed by an activity, finishing by 9 pm



Bouquets for Pat Faget and Jenny Millett with support from Charles Sluga

CONTENTS

	Page
From the President's Desk	2
ASOC News	3
Summer Art Experience	4
ASOC Activities	5
Exhibitions to Enter	6
Exhibitions to Visit	7
Bulletin Board	7
ASOC Weekly Groups	8
Contact Details	8
From the Editor	8

DATES FOR YOUR DIARY

Feb	
8	Art 2 Go
26	General Meeting
Mar	
15	Painting without brushes with Ilona Lasmanis
19	Deadline for Newsletter
26	General Meeting
28-29	Wildlife in Watercolour with Paul Margocsy



Jenny Millett, Joy Burch, Member for Brindabella, and Heather Acton at the Official Opening of the Tutor's Exhibition



Heather Acton and Rae Jacobson, the lucky winner of the SAE Raffle



FROM THE PRESIDENT'S DESK

Happy New Year everyone. It is hard to believe that a month has almost passed – and so much has happened in that time.

Those lucky enough to attend the SAE enjoyed a week of tuition with experienced, highly qualified tutors. I have read all the student evaluation forms and spoken to many people who attended - all reported the experience was worthwhile, they learned a lot during the week, and thoroughly enjoyed themselves. All tutors were excellent at transferring their knowledge and proved to be excellent teachers.

I attended the Charles Sluga workshop and it was brilliant. Would recommend this to all who want to, or do currently, work in watercolours. I understand the other tutors were equally highly regarded.

It was great to wander round and meet people in the workshops – I did this under the guise of taking photos for the new web site. Having looked at the photos (some are adequate) I think I will stick to my day job rather than venture into photography.

Overall, 97 people attended 12 workshops and, while numbers were down on previous years, this seems to reflect a trend with similar events also experiencing a downturn. Several tutors advised that numbers for Bathurst Art School are also down this year.

The cost of workshops had to be set to cover the increased costs for this year. ASOC's current financial situation meant that it was not possible to subsidise SAE and still run other activities throughout the year. The Management Committee takes its role of managing ASOC affairs very seriously and is determined to get the best value possible for all members.

Pricing of SAE for 2009 was a particularly difficult task, and was based on a range of factors, not least of which were:

- quality of the tutors (a number of whom are coming from interstate and therefore require travel & accommodation for the week + they all charge ASOC a fee)
- air conditioned, 'adult sized premises', excellent natural light, free parking (CIT, Bruce charges us a fee for use of the premises)
- small classes (8-15 students in each class)
- morning and afternoon teas, welcome event costs, tutors exhibition costs
- at least 30 hours of tuition (when worked out on an hourly basis - the fee is reasonable)
- on site art shop (not all sites would allow this option)

The Management Committee offered:

- 1 free place (drawn from all members who were registered for SAE by 7/12/09)
- 10% discount for Commonwealth Health Care Card holders (a significant % of the ASOC membership base)

Many of those wanting to do the SAE have already joined ASOC to take advantage of the member/non-member pricing differential. The ASOC SAE 2009 prices are cheaper than a number of other regional, similar length art classes on the eastern seaboard of Australia. Tutors also advised that they thought the price to be reasonable, considering the quality of tuition. A full report on SAE finances will be presented to the February General Meeting when all invoices have been received and costs known.

The SAE was the last ASOC event that was planned and mainly organised by the previous Management Committee and I would like to take this opportunity to thank that Committee for its tireless efforts and support of ASOC over the past year. A big thank you must also go to all the other volunteers who so willingly assisted to make this event happen. (Please see later in this Newsletter for more details.)

Simone Doherty is putting together a fantastic program of workshops with well known and new talented tutors. She gave the Management Committee a briefing on these and they are so exciting I would love to attend them all (think I'll have to get a second job soon!) There are no workshops currently planned for February. Some details are given in this Newsletter and full details are posted on our web site.

It is with much regret that I advise Robyn Shobrook, our Librarian, and Chan Dissanayake, our Webmaster, have resigned their voluntary positions due to family commitments. Robyn has been instrumental in restructuring, cataloguing and improving library services over the past two years. She has done a brilliant job and will be sorely missed. Chan has worked hard at trying to keep the website going and up to date – not an easy task given that it is hosted overseas. We thank Robyn and Chan for their hard work and wish them both well.

Annette Sadler has expressed an interest in managing the website once it is established and I thank her for that. We do need someone to fill Robyn's shoes and I am sure our members will fight for the chance to take on the librarian's role.

Until next time - Happy Painting, no such thing as a mistake – just a happy accident!

Jenny Millett



ASOC NEWS

GENERAL MEETINGS

The activity for the February meeting will be a Summer Painting Competition. Members can bring along paintings done in the three months from Dec 08 - February 09 - with a theme of "Summer". Members at the meeting will vote for the winner. This is a good chance to show off your holiday paintings.

AUTUMN EXHIBITION

There will not be an Autumn Exhibition in its known format this year due to competition from other events and a lack of funding. The Canberra Times Outdoor Art Show, March 7 – 14, provides an opportunity for all in the community to display paintings. Applications close on 6 February. The Management Committee is currently looking at other opportunities for members to display their work during Autumn and further details will shortly appear on the new website and in the next newsletter – so please keep on painting.

NEW ASOC WEBSITE

We are really pleased to announce a new-look ASOC

site – at no cost to ASOC, thanks to Jenny Millett. The address is still www.artistsocietyofcanberra.net but it is planned to change this to www.asoc.net.au as soon as possible

This website has a fresh new look with information easier to locate. There are lots of new features, including a Calendar of Events, opportunities for members to list works for sale, tutors to list their details, an on-line library catalogue and a revised member gallery where works can be displayed. Please browse through the website and provide Jenny Millett with feedback, suggestions for improvement, etc. Members will receive an email when the new web address is available.

CHRISTMAS PARTY

Last year's Christmas Party was attended by 29 members who enjoyed a nice lunch at the Brasserie Café at Weston Park. It was lovely weather and nice to be in the open marquee amid the relaxed garden atmosphere. There was the sound of lots of cheerful chatter and it was

great to see members having a social outing. If anyone has any photos could they please send them to Jenny Millett so we can put them up on the website.

NEW MEMBERS

Welcome to all our new members. We hope to see you at our next General Meeting.

ASOC LIBRARY

Don't forget to return your library items at the General Meeting. Check out the website – you will find the book and magazine catalogue online for your perusal.

MISSING KEY

Please advise Julie Morris if you know the whereabouts of the key to the Scout Hall, Yarralumla.

SURVEYS

It is not too late to return your survey forms for the Spring Exhibition and for ASOC in general. Assist the Management Committee to create an Artist Society which meets the needs of its members by completing and returning these forms today! If you cannot find the forms, they are available on the website.

WELCOME DESK ROSTER

Volunteers are needed each month to look after the Welcome Desk. Requirements:

- arrive early and set up the tables,
- remind members to sign the attendance book and pay \$2 to cover supper etc
- issue them with a lucky door prize ticket and help them find their name badge.
- if there is a raffle, encourage them to buy a ticket, keeping that money separate
- stay on hand to greet late-comers,
- help retrieve name badges as members leave the meeting,
- pass money onto our Treasurer, Julie, and
- pack up materials at the end of the meeting.

If you can help with this, our roster coordinator, Maggie Eibisch would love to hear from you. Contact meibisch@pc.gov.au or ph. 6231 4507(home) or 6240 3206 (work).



2009 SUMMER ART EXPERIENCE



Tradition was upheld with the SAE week being one of the hottest we have experienced this summer. Although the venue of the CIT is spread out it was very nice to have air conditioning in the rooms. I was very pleased that paintings did not melt on the way home as the car temperature in the afternoon was incredibly hot. I took a slab of butter home one evening and retrieved a dripping mess when I arrived home – even though the air conditioning in the car was on and is quite effective!



A big thank you to Heather Acton and her sub-committee of Eva and Geoff Henry, Maria Bendall, Julia Widdup, Ro Farrell, Simone Doherty, Maggie Eibisch (particularly for the fantastic catering at the tutor's exhibition) and Val Fitzpatrick and the army of other helpers who assisted with setting things up, providing support and tidying up at the end. Austin Farrell worked long and hard on setting up the rooms. The entire Acton family, particularly Colin, worked tirelessly throughout the week, giving up their holiday break. Julie and Liz from CEC also deserve a big thank you – their support was critical to the success of the event. A big thank you must go to Maureen Fromholtz for having her Art Store at the SAE and for working so hard to meet everyone's requests. Also thanks to Judy Power-Thompson for hosting a number of the tutors on Friday night for dinner and accommodation for those on their way out of Canberra. It took so many volunteers to make SAE a success and I thank you all – apologies to anyone who has not been mentioned and who so willingly gave up their time.



The tutors exhibition this year was opened by the Member for Brindabella, Joy Burch – a lovely lady who works tirelessly for her electorate and the people of Canberra. Most tutors submitted work and it was awesome to see the quality of the paintings on display. The raffle prize of a Clem Millward, 1987 print "Western Slopes", valued at \$770 was kindly donated by Artarmon Galleries, 479 Pacific Hwy, Artarmon NSW. It was won by Rae Jacobson, who was very excited. It is really nice to know that it is going to such a deserving home where it will be appreciated and treasured for many years to come. Thanks to Heather Acton for organising the prize and the raffle. Also thanks to Artarmon Galleries for donating the prize and also 23 copies of Ken Jack's book "The Flinder's Ranges" which was on sale during SAE. A few copies are left and will be at the next General Meeting for purchase at \$10.



Jenny Millett





ASOC ACTIVITIES



ART 2 GO

The next event on the ASOC calendar is Art 2 Go on 8 February. This is a wonderful opportunity for members to display unframed art work for sale. The ASOC stall will demonstrate the breadth and depth of talent we have and hopefully encourage new members to join.

ASOC will again have a marquee as a community group's involvement with the Multi-Cultural festival BUT this year we invite you to submit artworks as well as cards for sale.

Requirements:

- only unframed work or cards can be submitted,
- flat masterpieces must be mounted and shrink wrapped on 3mm foam-board; and
- canvas masterpieces must be protected by cardboard or clear plastic.
- every paper-based entry must be matted/mounted, backed by foam board and shrink wrapped.
- all entries must have a label on the front with the price clearly marked,
- all masterpieces must be priced no more than \$100; and be no larger than 75cm x 75cm,
- all entries must be entered with a completed Art-to-Go form prior to 5 February 2009.
- work can be dropped off at the ASOC office by 5 February,
- entries will not be accepted on the day, and
- payment can be made at drop off time.

The following week you will receive a notice listing sales of your work/s which will be paid at the February ASOC Meeting between 5.00- 6.30pm when you will also pick-up any of your works which remain unsold. Any works which are not collected, and for which prior arrangements have not been made, will be donated to charity

Since we have minimal overheads costs for this service to members, entry fees will be \$5 per entry and no commission charged. The number of masterpieces any member can enter is, at this stage, limited only by our capacity to transport masterpieces to Garema Place, which we will not know until YOU tell us if you are interested in participating in ASOC's new 2009 initiative. Contact- coordinator: Joan 6249 6615; foleshill@bigpond.com

WORKSHOP PROGRAM 2009



March 15 Painting without Brushes with Ilona Lasmanis

Ever wondered what if? Well you won't find all the answers here but if you are interested in exploring pictorial possibilities, taking a chance and having some fun with art then this workshop is for you. You will have the opportunity to play with your imagination and acrylic paint to create images using invented and non traditional tools such as cardboard, rollers, found objects etc. and with techniques like stamping, stencilling and collage. This workshop is suitable for enthusiasts of all levels of expertise.

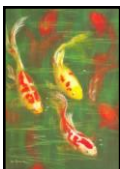
1 Day Workshop Members \$88, Non-members \$110 (inc GST)



March 28 & 29 The Wind Beneath My Wings" Wildlife in Watercolour with Paul Margocsy

This workshop will show you the beauty and wonder of wildlife art. With the use of water colours, it will enable you not only to paint feathers, but to paint attitude, character and photo quality about your subject. You will position your subject, paint the surrounding habitat and give a totally realistic look to your art. Composition is the main attribute to any painting and with this achieved the technique used will excite and enthrall not just the artist but the viewer. It's a fun course and a time to learn how to manage this medium and these wonderful natural creatures. The backgrounds and the "props" of wildlife art are important when you are painting realism. You will be shown different ways of tackling this. This course will be enthralling, exciting and totally fulfilling...painting nature can be fun. www.mckenziegallery.com.au/Paul_Margocsy_Exhibition.htm. 2

Day Workshop Members \$280, Non-members \$315 (inc GST)



May 2 & 3 - Pastels for Beginners with Gail Tavener

Back by popular demand, come and join Gail for this hands on learning experience with the fabulous pastel medium. Learn the many different facets of application, how to create tone and balance. This workshop will focus on not just what you see, but what you perceive. Learn good

habits right from the start with award winning artist Gail Tavener. www.gaitavener.com. 2 Day Workshop Members \$242, Non-members \$280.50 (inc GST)

May 30 & 31 - Watercolour with Charles Sluga

Also, back by popular demand. Charles Sluga is a highly skilled and versatile contemporary watercolourist, with an international reputation. He is an enthusiastic, popular and passionate teacher of watercolours (15 years). Charles regularly conducts workshops in Australia, and has led five painting tours to Europe (Italy and Croatia), and is invited to be Guest Artist at the renowned workshop venue Castle of Park, Scotland (September 2007). See some of Charles work at www.sluga.com.au.

2 Day Workshop Members \$242, Non-members \$280.50 (inc GST)

June 13 and June 20 - Print making Workshop. Tutor and Details To Be Advised

(See ASOC website for full details of workshops for the second half of the year. They will also be published in the next Newsletter.)

July 18 & 19 - Portraits in Oil with Susan Cesarini

August 2009 - Workshop To Be Advised

September 12 & 13 - Abstract Art in Acrylics with Peter Griffen

October 24 & 25 2009 – Landscapes in Oil – Masterclass - Tutor and Details To Be Advised

November 7 & 8 2009 – Sculpture with Peter Latona

For more information or to make a booking:

simone.doherty@webone.com.au or

ph 6259 2095



EXHIBITIONS TO ENTER

LOCAL

THE CANBERRA TIMES OUTDOOR ART SHOW
7-14 March. Entries close Feb 6. Entry form available at www.canberratimes.com.au (Click on Community and then Special Features.)

PHOENIX PRIZE FOR SPIRITUAL ART
2-25 April. Entries close 6 Feb. Contact sofa-gallery@anu.edu.au 02 6125 5841.

INTERSTATE:

CRICKET ART PRIZE 2009 – value \$20,000 www.publisherscup.org.au
The Publishers' Cup Inc Committee invites artists to submit a painting or composition representing or depicting some aspect or aspects of the game and sport of cricket, and may feature figurative, still-life, figure-in-landscape themes in settings of backyard cricket, beach cricket, social-cricket or local club cricket. The style may be representative, abstract or semi-abstract.

The prize will be awarded annually for a cricket painting by an **Australasian** artist completed during the 12 months preceding Monday September 28, **2009**.

Prize money awarded to the winner will be **AU\$20,000**.

Venue - The Members Pavilion – Sydney Cricket Ground.

PORTLAND ART PURCHASE EXHIBITION Mar 6-8, Entries close Feb 18, Contact Cassandra 0429234163 rco66978@bigpond.net

COWRA CALLEEN ART AWARD, March 20-April 19
Entries close Feb 9 by digital CD image, Contact 6340 2190BH 6340 2191 Fax cowraartgallery@nsw.gov.au www.cowraartgallery.com.au

OATLEY WEST ART & CRAFT, March 27-29, Entries close Feb 2, Contact Carol Strebel 9570 3016 strebel@optusnet.com.au

TUMUT ART AWARDS April 3-13, Entries close Feb 27, Contact Beverley 6947 4022 Lyn 6947 4022, tumutartsociety@aanet.com.au

THIRROUL SEASIDE ARTS FESTIVAL & ART PRIZE, April 4-5, Entries close March 13 with photo, Contact Pat 9526 6640 patwhite@unwired.com.au www.thirroulfestival.com

GREAT LAKES OPEN (Forster), April 5-15, Entries close March 20, Contact Vicki 6554 5855 Helen 65556307

BRIGHT AUTUMN EXHIBITION (Victoria) April 8-May 15, Entries close March 18, Contact Heather 035750 1660 manager@brightartgallery.org.au www.brightartgallery.org.au

SYDNEY ROYAL ARTS SHOW April 9-22 Entries close On Line Feb 2 2009, Contact Ana 97041152BH arts@rasnsw.com www.sydneyroyal.com.au

PORT MACQUARIE ANNUAL April 16-20, Entries close March 27, Contact Maureen 6584 4024 0409820 694 secretary@pmas.org.au

www.pmas.org.au

COFFS HARBOUR LILLIPILLI ART & CRAFT, April 17-26, Entries close Feb 27, Contact Barry Bloor

6654 7476 Marion 6649 1089 Jenny 66540988
bbloor@iprimus.com.au

CAMBERWELL ART SHOW (Victoria), April 25-
 May 2, Entries close March 27, 03 98820229 [art-
 show@camberwellrotary.org.au](mailto:art-show@camberwellrotary.org.au)
www.artshow.camberwellrotary.org.au

WINMALEE ARTFEST, May 1-3, Entries close
 March 9, Contact Debbie 4754 2822SH 4754 8888
Deborah.liehr@det.nsw.edu.au

WANGI DOBELL ART PRIZE, May 1-3, Entries
 close April 10, Contact Ruth Mike 4975 3344,

CURRABUBULA RED CROSS ART EXHIBITION,
 May 7-10, Entries close April 17, Contact Kay Pittman
 6768 9075p/f curra@ozemail.com.au
www.countryconnect.com.au

*The above information appeared to be correct at the
 time of printing but it is advisable to confirm details
 with the organisers at the time of obtaining entry
 form.*



EXHIBITIONS TO VISIT

The "**Wall to Wall**" art exhibition continues at
 the Artists Shed, 14 Foster St. Queanbeyan
 until March 1. Sixteen artists are exhibiting
 their work including ASOC members Isla Pat-
 terson and Sandra House. Each artist has
 hired the wall space for a period of three
 months. Open 10am to 6pm daily.

BLAKE PRIZE FOR RELIGIOUS ART

Peter Griffen's painting, "Cathedral Gorge", is
 touring in the Blake Prize for Religious Art.
 The first port of call is the Delmar Gallery, 144
 Victoria St, Ashfield until 22 February

NATIONAL GALLERY OF AUSTRALIA

The Degas Exhibition continues until March 22.



BULLETIN BOARD

MAUREEN'S ART SUPPLIES

Maureen's Art Supplies is offering big savings on Watercolour paper in packs of 10 sheets. Arches \$80, Saunders Waterford \$70 and Fabriano Artistico \$60. These prices are only while stocks last and will not be repeated this year so make sure you hurry in!

Maureen would like to thank everyone who supported her store at the SAE this January. She looks forward to developing a strong relationship with ASOC and its members throughout the year and invites you all to discuss any of your needs or ideas with her.

DISCOUNTS FOR MEMBERS

BUVELOT PICTURE FRAMERS

45 Colbee Court, Phillip. Rod Luton is offering 30% off his standard professional framing costs for our members. He is also carrying a range of ready made frames including ¼ sheet, ½ sheet and full sheet sizes at great prices.

CLASSIC FRAMING

Bob Smith at Classic Framing in Mawson, opposite the petrol station, is offering 10% off framing and framing supplies for our members.

JUST PICTURE THIS

Offers quality framing at very fair prices. Contact Elizabeth or Bill Mitchell on 02 62415935 for an appointment.

DISCOUNT GALLERY PICTURE FRAMING

50 Weedon Close Belconnen Phone: (02) 6251 3837 Facsimile: (02) 6253 2150. Custom Framing & Contract Framing, Conservation Framing Australiana Prints, Modern Prints Limited Editions, Original Artwork, Large Range of Artists Materials. 10% discount to students, seniors and artists

ECKERSLEY'S – Phillip, Braddon, Belconnen, Tuggeranong

10% off a number of items on presentation of a membership card. Members should also inquire about their loyalty program.

THE FRAMING STORES – Braddon, Gungahlin-10% off on presentation of a membership card.

(Please note that the Framing Store in Phillip doesn't give the 10% discount, but will consider it, depending on the volume involved).

WEAREHOUSE FRAMING & ART, Unit 8, 83 Wollongong Street, Fyshwick. Provides Ready-made & Custom Framing and provides 10% discount to members. Phone Robyn on 6280 8044 or 0438 949232.

WEEKLY GROUPS

For information about the weekly groups please contact the relevant person:

- Monday afternoon art group, Ngunnawal – Contact Derek Travers 62428239
- Monday afternoon tutored painting and sketching Group, Yarralumla Sea Scout Hall – Contact Ro Farrell 62813940
- Thursday morning painting group – contact Diane Alder 62888862
- Thursday afternoon portrait group – contact Heather Acton 61616364

Committee Contact Details

PRESIDENT	Jenny Millett	jMillett@iimetro.com.au
SECRETARY	Pat Faget	pat.faget@bigpond.com
TREASURER	Julie Morris	cec@goldweb.com.au
VICE PRESIDENT	Susan Hey	
SAE COORDINATOR	Heather Acton	chacton@gmail.com
COMMITTEE MEMBER	Jenny Robbins	jlartist@grapevine.com.au
COMMITTEE MEMBER	Joan	foleshill@bigpond.com
COMMITTEE MEMBER	Nenad Mutic	nivankap@tpg.com.au
SPRING EXHIBITION CO-ORDINATOR	Jacquie Rogers	jacquie.rogers@bigpond.com

Other Contact Details

WORKSHOP COORDINATOR	Simone Doherty	simone.doherty@webone.com.au
LIBRARY CO-ORDINATOR	Robyn Shobbrook	robynsho@gmail.com
NEWSLETTER EDITOR	Annette Sadler	asadler@grapevine.com.au
SUPPER/WELCOME DESK CO-ORDINATOR	Maggie Eibisch	meibisch@pc.gov.au

FROM THE EDITOR

E-mails and electronic versions of the Newsletter are sent to those members who indicated they wish to receive such, either in their application for membership form or renewal of membership form.

The contact details for the Editor, Annette Sadler are:

PO Box 2020, Canberra ACT 2601

asadler@grapevine.com.au

02 62478458

Deadline for April/May Newsletter is 19 March