



# THE ARTISTS SOCIETY OF CANBERRA

*A supportive creative  
community for visual arts  
and artists*

Founded 7 October 1927

The Artists Society of Canberra Inc  
PO Box 1778  
WODEN ACT 2606

[www.asoc.net.au](http://www.asoc.net.au)

ABN: 85 510 725 624

## NEWSLETTER

ISSUE No 428  
JUNE/JULY 2010

### DATES FOR YOUR DIARY

#### July

- 2 Monthly Meeting (not June 25):  
Forum for Planning ASOC's Future  
at the Blaxland Centre
- 30 Monthly Meeting:  
Chan Dissanayake  
Demonstration of Landscape Painting  
in Watercolour

#### August:

- 27 ANNUAL GENERAL MEETING  
and Gary Myers Acrylic Demonstration

#### September

- 17-24 ASOC Molonglo Catchment  
Exhibition at Floriade

#### October

- 1-4 ASOC Spring Exhibition  
at the Wesley Centre

### MEMBERSHIP RENEWALS

If you received this Newsletter in printed form you will have also received a renewal form.

If you receive your Newsletter by e.mail you will need to **download the renewal form** from the ASOC website. Go to [www.asoc.net.au](http://www.asoc.net.au) and scroll down the page until you find "Forms" on the left hand side. Click on "Forms", then click on "Membership Renewal Form" (the second form in the list which appears in the centre of the screen.) Print out a copy of this form.

Please complete and return your form to the **Membership Secretary of ASOC, PO Box 1778, Woden ACT 2606**, with your membership payment.

### CONTENTS

From the President's Desk.....	2
ASOC News .....	3-4
Exhibitions to Visit .....	4
ASOC Workshop .....	5
SAE 2011 .....	5
2010 Spring Exhibition Update.....	6
Molonglo Catchment Art Prize .....	6
Exhibitions to Enter .....	7
Bulletin Board .....	7
Weekly Groups .....	8
Discounts for Members .....	8

### MEMBERS' MONTHLY MEETINGS

Our monthly meetings are held on a FRIDAY at the YARRALUMLA UNITING CHURCH HALL in Denman Street (close to Adelaide Avenue).

The meeting commences at 7.00 pm and entry is \$2.

### APPLICATION FOR PREMISES: KEEPING INFORMED

By mid-June ASOC will be submitting an application to M16 for a studio at the Blaxland Centre, (assuming we receive the support of the membership to do so and that looks highly likely at the time of writing). We expect to hear the result of our application on 2 July, and we would of course inform members attending the meeting that evening who will be gathered in anticipation of planning the use of the premises! Most members will be informed via email which is a great help in getting out timely messages. Our webpage ([www.asoc.net.au](http://www.asoc.net.au)) would also be updated with the news should we be successful.



## FROM THE PRESIDENT'S DESK

---

When this newsletter arrives it will be winter. I find winter in Canberra is quite beautiful, with bare trees, frost and fog. We are very fortunate to live in such a diverse area with so much painting material to choose from. The days are still warm enough to get out and paint, although a studio offers a good alternative on some days.

I was interviewing for a job vacancy this week with one candidate travelling from the Central Coast. He arrived a few days before the interview with his partner to have a look around. With all the Canberra bashing going on at the moment it was really nice to hear him say how lovely and versatile our city is. I noted he had also visited the National Gallery.

Thank you to Margaret Flanagan who is putting this newsletter together in Annette's absence. I'm sure our members look forward to their newsletters as I do. It is a great way to find out what is happening – and an excuse to stop for a cuppa whilst you read. ASOC receives newsletters from many local art groups and it is very interesting to read about their activities and what is happening in their local area. So many people are involved in art in one form or another.

Denise Moule has volunteered to be our new Librarian and we welcome her to this role. Hopefully it will be a little easier for the Librarian if we secure permanent premises as we can have the library cupboard on site. I can't thank Kay Smith and her husband Ray enough for their fantastic effort in managing the library over the past 2 years. Between them they have done a wonderful job and they have remained cheerful and flexible throughout this period, in spite of having to carry books, etc to meetings in recent months. We wish them both all the best for their move north - we hope they will stay in touch.

Whilst the plants may be dormant at this time of year you will have noticed, from Tim's emails and the motion regarding accommodation, sent earlier this month, that your committee has not been sleeping on the job. By the time this newsletter arrives Tim will have provided you with further information.

The Committee is very excited at the prospect of permanent accommodation, as this would provide tremendous opportunities for ASOC. It would be wonderful for ASOC to be part of a vibrant arts community and for members to be able to start their own art groups in this creative environment.

Thank you to the members who could not attend the Special General Meeting but who took the time to send in proxies. Your support is very much appreciated.

Ann has been busy as Treasurer putting a budget together for the next financial year to make sure the proposed accommodation option is affordable. This budget will be presented at the Special General Meeting. Preparation for SAE 2011 is going well. Ann has put together a fantastic array of talented tutors and SAE 2011 will be advertised around August, with members having first option with a discount for early bird payment.

Tim has the Spring Exhibition Committee working very hard at the moment – it is amazing how much has to be done early to ensure a successful exhibition. Thanks to those who have joined the Exhibition Committee and volunteered their time. It takes so many volunteers to make this event successful, particularly as other local organisations are running art shows at the same time. Tim has provided further information on the Spring Exhibition further on in this newsletter.

Beverly Gaykema is our organiser for the Molonglo Catchment Prize and has an article on this later in this newsletter. There are some changes this year so please read this article carefully. Bev, as ASOC Secretary, has also been labouring away at getting our records in order, which is turning out to be quite a job.

Vivienne Pinder is our Membership Secretary and will no doubt be very busy in the coming months as membership fees becomes due. Vivienne also manages the email list for the mail outs.

We hope all our members will rejoin as the next year promises to be quite exciting for ASOC. A membership form is included with this newsletter and is also available on the website. This year we have three questions on the form. This will enable us to find out what members really want from ASOC and ensure the committee is meeting members' needs. I strongly encourage all members to fill this part of the form out as it will provide very useful information for future planning. Further information on this is available below.

Lastly don't forget the Gary Myers Acrylic Workshop in August. Gary is a very talented artist and tutor, and his work is very colourful and fresh. This is one of those rare opportunities to learn from a very unique artist. For further information and to see Gary's colourful work, visit our website. An enrolment form is also available on the web.

Until Next Time

Happy Painting!

*Jenny Millett*



### MEMBERS MONTHLY MEETINGS

At the Yarralumla Uniting Church Hall, Denman Street, Yarralumla.  
As always, the Library will be operating and tea and coffee will be served. \$2 entry.

#### FRIDAY 2 JULY 2 at 7pm FORUM FOR PLANNING ASOC'S FUTURE AT THE BLAXLAND CENTRE

By July 2 we will know whether we have been successful in our application for a studio at the Blaxland Centre in Griffith. Assuming a successful outcome, we are calling this important meeting of members to discuss how we might utilise the new premises. We hope that all of those interested in having input into the initial planning of programs will make a special effort to be there. We will be particularly interested in what member painting and drawing groups might be formed to meet on a weekly basis during weekdays and weekends. Even before our application goes in, some individual members have indicated their willingness to help set up new studio groups!

At this forum small groups will be formed so that everyone gets a good opportunity of putting forward their ideas, and then we will seek to hear from all the groups for a summary. This direct input from members should be very useful to the Management Committee in planning programs for the weekly usage of the studio.

**(PLEASE NOTE THE CHANGE OF DATE FOR THIS MEETING.** There is to be no meeting on June 25 as the Yarralumla Uniting Church has its MidWinter Art and Craft show that weekend. We have had to make our meeting a week later than usual. )

#### FRIDAY 30 JULY at 7pm CHAN DISSANAYAKE : DEMONSTRATION OF LANDSCAPE PAINTING IN WATERCOLOUR

Many of us have been delighted with the emergence of ASOC member Chan Dissanayake as an outstanding painter in watercolors. Chan was a guest artist at the recent Canberra Times Outdoor Art Show at which he experienced great sales success. People clearly are attracted to the beauty of his luminous watercolour treatment of subjects. Earlier in the year he exhibited a series of paintings of the figure at the Belconnen Community Centre gallery, and he has also exhibited at the Bungendore Woodworks gallery. For this meeting, Chan will demonstrate his approach to a landscape:. He will first show a completed work, and then show how he arrived there. Try not to miss this one! (It could be our last meeting at the Yarralumla Uniting Church Hall.)

### RENEWALS AND QUESTIONS ON THE RENEWAL FORM

Included with the newsletter is your membership renewal form, or you can access it from the internet – see the explanation on page 1. Make sure you complete the form so that you are eligible for entry into our annual exhibitions, to vote at the AGM in August and receive reduced rates for workshops and the SAE. With the potential acquisition of our own studio and new activities, there are all sorts of good reasons to renew your membership for the coming year.

You will notice that at the base of the renewal form there are three questions with open ended responses, and we are asking you to respond to these when you renew. Your responses will help the Management Committee plan for the future. (Obviously if you live out of town you might find the last question irrelevant, given it is a question about what we might offer members in our new studio.)

We want to meet your needs and expectations more effectively, and Tim Hardy will collate the responses and report back to all members. ASOC is listening to you, and on the move as a consequence!

### EMAIL DELIVERY PROBLEMS

Each time we send out bulk emails to the 250 members who have supplied us with email addresses we get some returned as “undeliverable”. This might be because we have the wrong address, it no longer exists, or there are barriers to delivery. Please note that regular fortnightly Updates about ASOC are sent out as well as other special announcements, and if you are not receiving them please let Viv Pinder, our Membership Secretary know ([vpinder@home.com.au](mailto:vpinder@home.com.au)). If you wish to be put on the email list for the first time or have changed your email address you should also contact Viv.

### NEWSLETTER ACTING EDITOR

We are very grateful that Margaret Flanagan is editing this edition of the newsletter as Annette Sadler is now overseas. Fortunately, Margaret has past editorial experience with other groups. Thanks Margaret!

### ASOC LIBRARY

Kay Smith and her non-ASOC member husband Ray have done a wonderful job running the library at our meetings. We are most grateful to both of them for organising things so well, for storing the library at their home, and carting it to the monthly meetings. But they will be leaving Canberra eventually, and so we are most fortunate that Denise Moule has offered to take on the library. Over the next few months Kay and Ray will show Denise the ropes, especially the computerised loan system. Thanks Denise for taking on this important service for our members.

### ANNUAL GENERAL MEETING

The date for this year's AGM has been set as August 27, which is two months earlier than in the past few years. This has been made possible by having our financial statements ready for the auditor in early July. Hopefully this AGM will be held in our new premises.

### PAINTING WITH PARKINSONS

We had an inspiring talk from Nancy Tingey at our April monthly meeting as she shared her work as a leader in using painting as therapy with those who have Parkinsons Disease. We have purchased the 20 minute new film "Making a Mark: Art as therapy for Parkinson's" in which Nancy features with a Canberra group, and that DVD will soon be in the ASOC library for loan.

If you are interested in becoming involved with Painting with Parkinsons as a volunteer helper, Nancy tells us: "We meet every Friday morning (except Good Friday between mid February and the end November) in the Banks Building, at the Botanic Gardens. We have 10 participants at the moment and new members (people with Parkinson's and their carers) are always welcome, so tell your Parkinson's friends about us. Absolutely no previous experience necessary. The program is specially designed to help everyone express themselves through art materials however severe their Parkinson's symptoms may be. We need volunteers to help serve tea, coffee and cake at the start of the session, help put out and replenish art materials, and document work at the end. Everyone involved is amazed by what they see and learn while working with this group so if you think this is for you, please give it a try." If interested please ring Nancy Tingey on 6253 3574.

**CONGRATULATIONS** to member **Judi Power Thomson**, whose portrait of Don Burrows has been selected as a finalist in the prestigious 2010 Shirley Hannan National Portrait Prize, held at Bega every two years. Judi took out second prize in this event in 2008 with a portrait of Larry Sitsky.



## EXHIBITIONS TO VISIT

### GLOWING LIGHT

Glowing Light, the watercolour exhibition on at the Brindabella Hills Gallery and Vineyards is continuing beyond May with replacement works by artists Nell Anderson & Isla Patterson. Brindabella Hills is out from Hall. Address is Woodgrove Close, along Wallaroo Road. (follow the signs).

Open weekends and Public holidays from 10am to 5pm. Phone 6230 2583

**JUDE RAE STILL LIFES** at the Canberra Museum and Gallery, London Circuit. If you value the still life do not miss this stunning show, in oils, charcoals, and watercolours. Jude Rae shows that even gas bottles can be very beautiful subjects! Ends June 6.

### BELCONNEN ARTS CENTRE

28 May–20 June

**Exploring** human interconnectivity with environment present and future, and the complex and diverse networks which

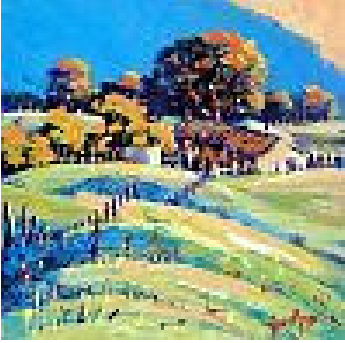
link us with our ecosystem. A superb array of photographs, painting, prints, sculpture, textile and neon art curated by Program Manager, Christine Watson, in celebration of World Environment Day. A rich program of activities will accompany this exhibition. Presented in association with staff and students of University of Canberra and the Australian National University.

**Exhibition opening** - Friday 28 May at 6:00pm



## ASOC WORKSHOP

---



### GARY MYERS - ACRYLIC - BOLD COLOUR.

**Demo at meeting Friday August 27th.**

**Workshop Sat 28th and Sunday 29th.**

Gary's artworks are highly sought after throughout Australia as well as by overseas collectors after exhibitions in England and China. He has held over 30 successful one-man showings, many of them in Victoria where he lived for a number of years whilst also tutoring in art and his work is represented in private, corporate and educational institute collections across Australia and many overseas countries.

Currently he is exhibiting on a regular basis with Kevin Hill as one of his Top Ten Australian Artists. Gary is a full time artist residing in Maleny, Queensland where his family dates back four generations. It is here that he has been inspired to use a colourful and dramatic approach to his varied subjects.

Please check out his website at [www.garymyers.net.au](http://www.garymyers.net.au). Enquiries phone Ann 6238 1629 or use the booking sheet on our website.



## SAE 2011

---

### 10th - 14th JANUARY

The SAE next year is going back to being held at Orana School where the first 6 were originally held, until the bushfires. Bookings for tutors are well under way and the brochure should be available for mail out early August. However all ASOC members will be advised prior to the mail out to enable you to take advantage of booking first.

We will be having 12 classes with a maximum of 12 students in each class. Those who have attended in previous years will also love to see the new forest, which is a large group of trees ASOC donated to the school after the fires.

Some of the tutors who have verbally agreed to attend are

OIL	<b>John Corby</b> from 2010 SAE
	<b>Rodney Symmons</b> from Vic
W/C	<b>Chan Dissanayake</b> Canberra
MIXED	<b>Val Fitzpatrick</b> from 2010 SAE
	<b>Suzanne Lindhorst</b> from South Coast
PRINTS	<b>Jo Hollier</b> Canberra
DRAWING	<b>Chris McClelland</b> NSW
LIFE DRAWING	<b>Pauline Adair</b> Qld

Hopefully in the next newsletter we will be able to have the whole 12 listed for you.

We are hoping to keep the price for most classes for ASOC members at around \$560 with a couple of advanced classes at \$600 (less pupils), with non ASOC members paying \$50 more. There will be an early bird discount of \$30 if paid for in full by 1st October 2010.



## 2010 SPRING EXHIBITION UPDATE

Planning for the Spring Exhibition (October 1-4 at the Wesley Centre) is proceeding well. We have a committed and harmonious committee working away on all fronts. We are very pleased that Genevieve Jacobs, ABC 666 Radio presenter will be opening the show. Genevieve is quite passionate about the arts and has invited us onto her afternoon radio show in the run up to the opening.



*Spacious interior of the Wesley Centre*



*Entrance to the Wesley Centre*

Entry forms for the Spring Exhibition and the Molonglo Catchment Prize will be sent out at the beginning of August with the August/September Newsletter. I hope you are already thinking about entering our exhibition, especially if you have not done so before.

Tim Hardy, Spring Exhibition Coordinator  
(Enquiries to 6258 7178 or [timahardy@hotmail.com](mailto:timahardy@hotmail.com))



## MOLONGLO CATCHMENT ART PRIZE 2010

**Dates:** **Floriade** - Friday 17 Sept to Friday 24 Sept, then  
**ASOC Spring Exhibition** - Friday 1 Oct to Monday 4 October

**Opening Night:** Friday 1 Oct 6pm (at ASOC Spring Exhibition)

**2010 MCAP Coordinator:** Bev Gaykema - [bevkema@hotmail.com](mailto:bevkema@hotmail.com) - 0412 470529

**Theme:** **Along the Molonglo...** "challenges artists to capture the 'spirit of the Molonglo': its natural environment, upon which we rely, and its people, its past and its future." Lynton Bond, President MCG

**Media Categories:** Any painting/drawing media is accepted

- **Major Prizes:**
  - 1<sup>st</sup> Prize \$2000 (acquisitive) Sponsored by ACTEW
  - 2<sup>nd</sup> and 3<sup>rd</sup> Prizes are new for 2010
  - Peoples' Choice Award – voting to take place at Floriade
- **More details:**
  - This year there will be a gap of a week between the end of the exhibition at Floriade and the opening of the ASOC Spring Exhibition. It will be a condition of acceptance into the MCAP that works are displayed at Floriade, then collected by the artist and delivered to the Spring Exhibition the following week.
  - We have 2 judges for the MCAP this year and the judging will be held in conjunction with the ASOC Spring Exhibition on 1st Oct.
  - The announcement of the winners and the awarding of prizes will take place at the opening of the Spring Exhibition.
  - We are NOT allowed to sell paintings at Floriade; I strongly suggest that artists have their cards/flyers available at Floriade for the ASOC staff on duty to pass onto prospective buyers. We will be handing out flyers of. ASOC's Spring Exhibition where they can purchase works.

- Setup will take place on Thursday 16 September after hours from 6.00pm, to be ready for display on the Friday 17 September.
- Pack up will take place on Friday 24 September at 2.00pm. Paintings can be stored in the annex area ready for collection 7.00am - 8.30am Saturday 25 September.
- Entry Forms are currently being revised and will be available in August 2010 on the forms page of the ASOC website and in the August Newsletter.



## EXHIBITIONS TO ENTER

### Local

#### SQUARES AT STRATHNAIRN

SCOOP@STRATHNAIRN presents "SQUARE" 3<sup>rd</sup> People's Choice Exhibition, 26 June - 11 July. First prize \$250. What can you create on a 12x12 inch canvas? Use any media. Let your imagination go wild. Entry Kits available between 8 May and 13 June from MAUREEN'S ART SUPPLIES 2/29 Badham St., Dickson (business hours) or STRATHNAIRN HOMESTEAD GALLERY 90 Stockdill Drive, Holt (weekends). Exhibits must be for sale and must be presented on the square provided in the entry kit. Entry fee \$20. All votes will go in the draw for a special voter's prize. Enquiries [cosmosilk@hotmail.com](mailto:cosmosilk@hotmail.com) or [kanda.cole@bigpond.com](mailto:kanda.cole@bigpond.com)

#### BELCONNEN ARTS CENTRE

12:00–5:00pm Saturday 12 June

#### The World Environment Day Art and Design

Market is a fabulous art market which showcases cutting-edge, environmentally-friendly art and design from local and regional producers. If you are a local or regional artist, craftsperson or designer and would like to be a part of this event, please download an

expression of interest form by going to [www.belconnenartscentre.com.au](http://www.belconnenartscentre.com.au) and submit to the Arts Centre before 5:00pm, Monday 16 May.

### Interstate

**ALVARO PAINTING PRIZE Oil & Acrylic** (Bowral Dist Art Soc) June 20–July 5; Entries close 16 June with work; Contact 4861 4093P/F or Fiona Fudge [bdas@ispdr.net.au](mailto:bdas@ispdr.net.au)

#### JACARANDA DRAWING AWARD

Entries are now open for Grafton Regional Gallery's flagship event, the Jacaranda Acquisitive Drawing Award (JADA). The JADA provides artists who reside in Australia with a unique opportunity to explore the complexity of drawing through Australia's richest regional drawing award. The major award of \$15,000 is acquisitive, along with further acquisitions to the value of \$15,000. Entries selected for the JADA will tour regional and metropolitan galleries for a period of approximately eighteen months. Judging the JADA in 2010 is curator, writer and broadcaster Julie Ewington, who is currently curatorial Manager of Australian Art at Queensland Art Gallery. Guidelines and application details online: [www.graftongallery.nsw.gov.au](http://www.graftongallery.nsw.gov.au). Entries close August 6.



## BULLETIN BOARD

**MAUREEN'S ART SUPPLIES** is having a one day sale on Friday 11th June with a minimum 20% off all stock. The store is open from 10am until 6pm. Maureen's Art Supplies 2/29 Badham St, Dickson Phone (02) 6162 1022.

#### EXHIBITION OF ARTISTS BOOKS

The ACT Writers Centre is calling for entries for an exhibition of artists' books with a story component. The exhibition will be held at the Tuggeranong Arts Centre from 27 May to 6 June, 2010. The story does not need to be lengthy and it can be the creation of the book artist, or it can be a collaboration (for example, a writer provides the story and a book artist makes the book). Books can be offered for sale. Enquiries: Jane Schauer, 62608503

#### BELCONNEN ARTS CENTRE

Come along to the new jewel of Lake Ginninderra! Our gallery regularly showcases the varied talents of local contemporary artists, with a new exhibition to see every three weeks. Feeling creative? Why not enrol in one of our fantastic range of creative workshops, or find your inner rhythm in our goro-

geous dance studio. There's something for everyone, no matter what takes your fancy. We'd love to meet you, so come on down, enjoy a quiet cup of coffee and take in the panoramic lakeside views from our stunning foyer.

The building is situated on the foreshore of Lake Ginninderra in northwest Canberra.

**Belconnen Arts Centre** Incorporated is seeking motivated and highly skilled **administrative and arts-workers** to join the team;

**Administration officer** (31-38hrs/week) to manage the front of house reception, kiosk, support hirers and assist the director and other staff with general administration duties.

**Finance officer** (22hrs/week) to manage the day to day cash and banking, book-keeping and legal contracts for the organisation.

**Exhibitions coordinator** (31hrs/week) to develop, deliver and promote the annual program of exhibitions and associated activities. For more information go to [www.belconnenartscentre.com.au](http://www.belconnenartscentre.com.au).

## .WEEKLY GROUPS

For information about vacancies in the following groups, please contact the relevant contact person:

- **Wednesday** 1.30 – 3.30pm Portrait Group (previously Thursday). **Models needed.** To be held at Maria Bendall's home for the next 3 weeks because of refurbishment at usual venue – please contact Heather Acton 61616364
- **Thursday morning** tutored painting and drawing group (previously Tuesday morning), Yarralumla. Please note that this group will not be operating on 3<sup>rd</sup> and 10<sup>th</sup> June because of refurbishment at the venue – contact Heather Acton 6161 6364.
- **Thursday morning** painting group – **everyone welcome** – contact Diane Alder 62888862

### DISCOUNTS FOR MEMBERS

#### BUVELOT PICTURE FRAMERS

45 Colbee Court, Phillip. Rod Luton is offering 30% off his standard professional framing costs for our members. He is also carrying a range of ready made frames including ¼ sheet, ½ sheet and full sheet sizes at great prices.

#### CLASSIC FRAMING

Bob Smith at Classic Framing in Mawson, opposite the petrol station, is offering 10% off framing and framing supplies for our members.

#### JUST PICTURE THIS

Offers quality framing at very fair prices. Contact Elizabeth or Bill Mitchell on 02 62415935 for an appointment.

#### DISCOUNT GALLERY PICTURE FRAMING

50 Weedon Close Belconnen Phone: (02) 6251 3837 Facsimile: (02) 6253 2150. Custom Framing & Contract Framing, Conservation Framing Australian Prints, Modern Prints Limited Editions, Original Artwork, Large Range of Artists Materials. 10% discount to students, seniors and artists

#### MAUREEN'S ART SUPPLIES

Offers 10% discount to members.

#### ECKERSLEY'S – Phillip, Braddon, Belconnen, Tuggeranong

10% off a number of items on presentation of a membership card. Members should also inquire about their loyalty program.

**THE FRAMING STORES – Braddon, Gungahlin**-10% off on presentation of a membership card.

**WEAREHOUSE FRAMING & ART**, Unit 8, 83 Wollongong Street, Fyshwick. Provides Ready-made & Custom Framing and provides 10% discount to members. Phone Robyn on 6280 8044 or 0438 949232.

(Please note that the Framing Store in Phillip doesn't give the 10% discount, but will consider it, depending on the volume involved).

#### Committee Contact Details

<b>PRESIDENT</b> Jenny Millett 6299 9065	<a href="mailto:jmillett@iimetro.com.au">jmillett@iimetro.com.au</a>
<b>VICE PRESIDENT</b> Tim Hardy 6258 7178	<a href="mailto:timahardy@hotmail.com">timahardy@hotmail.com</a>
<b>SECRETARY</b> Bev Gaykema 6248 0131	<a href="mailto:bevkema@hotmail.com">bevkema@hotmail.com</a>
<b>TREASURER</b> Ann Hand 6238 1629	<a href="mailto:ahand@bigpond.net.au">ahand@bigpond.net.au</a>
<b>MEMBERSHIP SECRETARY</b> Vivien Pinder	<a href="mailto:vpinder@homemail.com.au">vpinder@homemail.com.au</a>
<b>TEMPORARY WORKSHOP COORDINATOR</b> Ann Hand	<a href="mailto:ahand@bigpond.net.au">ahand@bigpond.net.au</a>
<b>COMMITTEE MEMBER</b> Katie Volter	<a href="mailto:katie.volter@hotmail.com">katie.volter@hotmail.com</a>
<b>COMMITTEE MEMBER</b> Nenad Mutic	<a href="mailto:nivankap@tpg.com.au">nivankap@tpg.com.au</a>

#### Other Contact Details

<b>LIBRARY CO-ORDINATOR</b> Denise Moule	
<b>NEWSLETTER EDITOR</b> Annette Sadler	<a href="mailto:asadler@grapevine.com.au">asadler@grapevine.com.au</a>
<b>SUPPER/WELCOME DESK CO-ORDINATOR</b> Maggie Eibisch	<a href="mailto:meibisch@pc.gov.au">meibisch@pc.gov.au</a>

#### FROM THE EDITOR

The contact details for the Editor, Annette Sadler are: PO Box 2020, Canberra ACT 2601;

Tel: 02 62478458 [asadler@grapevine.com.au](mailto:asadler@grapevine.com.au)

**Deadline for August/September Newsletter is 26<sup>th</sup> July.**